



**Gustav/Ike Recovery
Technical Assistance Workshop**

March 26, 2009

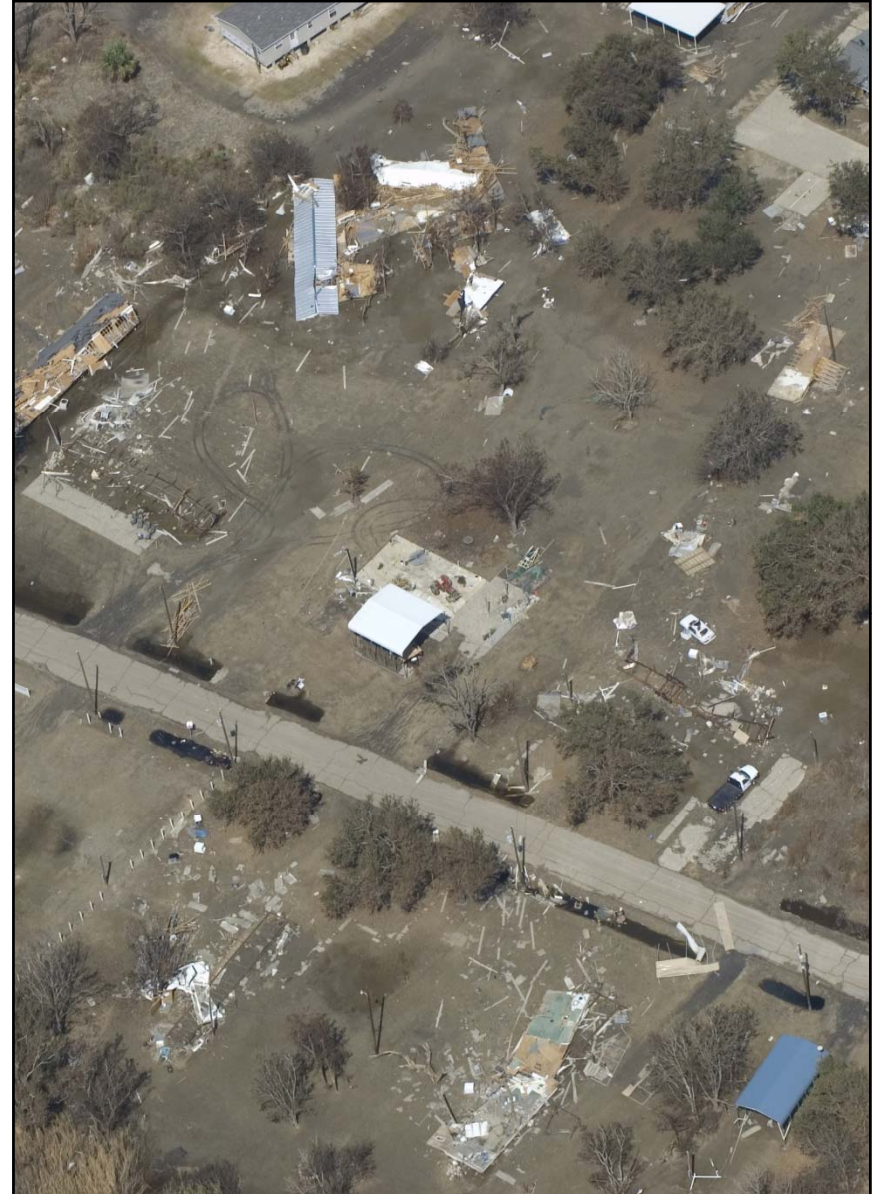


Hurricanes Gustav and Ike Impact

The storms, which impacted Louisiana on September 1 and 12, 2008:

- Caused 51 deaths.
- Flooded 12,000 – 13,000 homes and damaged 150,000 to 300,000.
- Gustav severely impacted 43 parishes; Ike severely impacted 14.
- Caused an estimated \$8 - \$20 billion in physical damage. (source: LED)
- Caused more than \$1 billion in public infrastructure damage.
- Caused \$2-7 billion in housing damages, including \$1.7 billion in uninsured losses.
- Economic activity losses could reach \$5 billion.

At right, Hurricane Ike's storm surge and winds tore a destructive path through Cameron Parish.





2008 Disaster CDBG Allocations

Background

- Consolidated Security Disaster Assistance and Continuing Appropriations Act, 2009 (Public Law 110-329) approved September 2008.
- There were 70 declared disasters in 2008
- Initial allocation is based on 33 disasters where data on unmet need was available
- First allocation is \$2.145B of \$6.1165B made by HUD in November 2008. (\$377M was rescinded by Congress and \$6.5M is for HUD admin costs)
- LRA submitted Action Plan for Gustav and Ike Recovery to HUD on January 2009. Louisiana was first state to submit Action Plan.
- Louisiana's share of 1st allocation is \$438,223,344



2008 Disaster CDBG Allocations

Background

- By statute, \$46,520,525 of Louisiana's allocation (10.6%) must be spent on affordable rental housing
- At least 50 percent of total funds must benefit low to moderate income individuals
- No funds may be used for matching requirement, share or contribution for any other Federal programs
- Funds must not be used for activities reimbursable by, or for activities made available by, FEMA or the Army Corps of Engineers



Gustav/Ike Action Plan

The first allocation was made in November 2008. HUD is expected to make the second allocation in February or March 2009.

The state has allocated these CDBG funds to the impacted parishes based on HUD's formula. Parishes will select from a menu of options and decide how they will spend the funds.

Areas of Funding:

Agricultural and Fisheries Recovery

Coastal Restoration

Housing

- Homeowner Incentive Program
- Rehabilitation
- Housing Relocation Program
- Homeownership Financing
- Workforce Rental Housing and Multi-family Units
- Homelessness Prevention
- Neighborhood Redevelopment

Infrastructure

Provide additional funding for projects that repairs or rebuilds damages from hurricanes Gustav and Ike; or hardens existing structures or infrastructure to prevent damage from future disasters.

Economic Development

- Financial Assistance for Impacted Businesses
- Technical Assistance



Louisiana's First Allocation Breakdown

Program	Dollars
<i>State Implemented</i>	
Agriculture*	\$30.0M
Coastal Restoration	\$15.0M
Fisheries	\$15.0M
Affordable Rental Housing	\$46.5M
<i>Parish Implemented</i>	\$309.8M
<ul style="list-style-type: none">•Housing Recovery• Infrastructure•Economic Development & Community Revitalization	
Admin	\$21.9M
TOTAL	\$438.2M



Top 10 Most Damaged Parishes under HUD formula

Parish	Estimated 1 st Allocation	Estimated 2 nd Allocation	Est. Final Allocation	Affordable Rental
Terrebonne	\$67M	\$55M	\$120M	\$10M
Cameron	\$29M	\$24M	\$52M	\$4M
Iberville	\$24M	\$19M	\$43M	\$4M
E. Baton Rouge	\$18M	\$15M	\$33M	\$3M
Lafourche	\$18M	\$15M	\$33M	\$3M
Jefferson	\$14M	\$13M	\$27M	
Assumption	\$14M	\$12M	\$26M	
St. Mary	\$10M	\$9M	\$19M	
Ascension	\$11M	\$10M	\$21M	
Calcasieu	\$10M	\$9M	\$19M	

IMPORTANT NOTE: Numbers on second allocation are estimates – these numbers are provided for planning purposes to give parishes an idea of the scope of funds that will be available.



Affordable Housing Set-aside

Parish	Dollars
Terrebonne	\$10M
Cameron	\$4M
Iberville	\$4M
Lafourche	\$3M
East Baton Rouge	\$3M
Competitive Pool – All parishes	\$23M
TOTAL	\$47M

- 50% will be pro-rated to top 5 impacted parishes as above
- 50% will be open to all parishes as competitive pool
- Any parish may utilize their own parish allocation for affordable housing – they are not limited by the set-aside amount



Second Allocation Highlights

- Second allocation will likely be announced end of April
- Allocations will be recalculated based on additional data including PA match
- First allocation will be subtracted from second allocation
- Louisiana share may decrease as more states become eligible and additional data is considered